

AI Curriculum

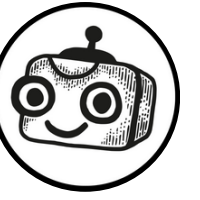
Teaching Material for the AI Curriculum for Elementary and Secondary Schools  
Computer Science at Secondary Schools

01

Machine Learning Deck

# Dataset





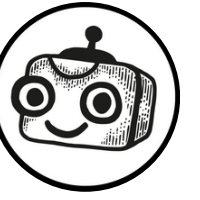
# Introductory Discussion

People sort things into categories  
to make the world more understandable.





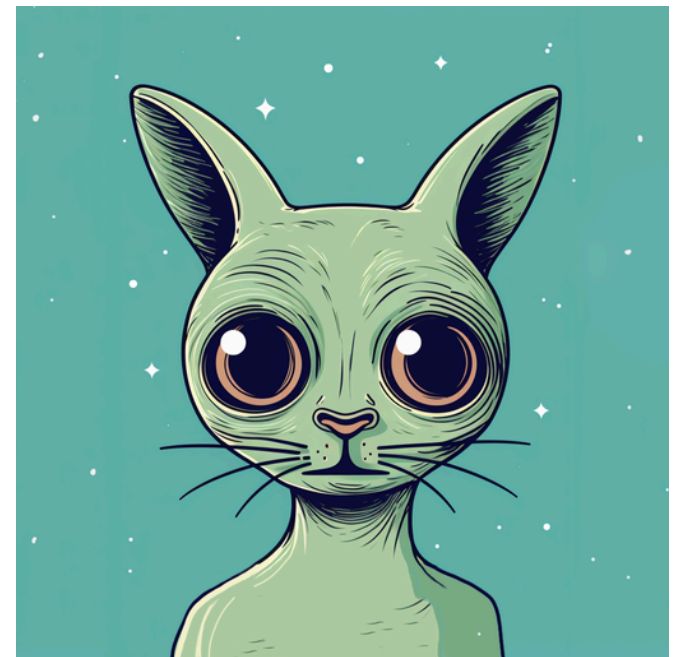
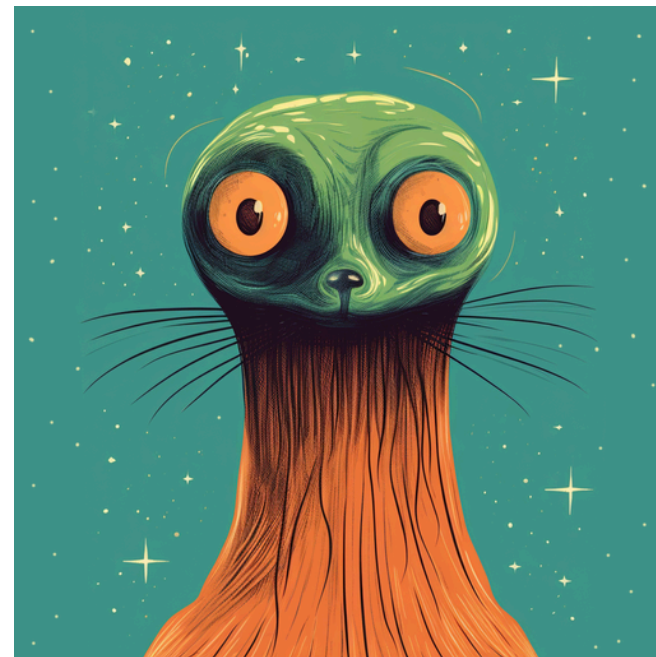
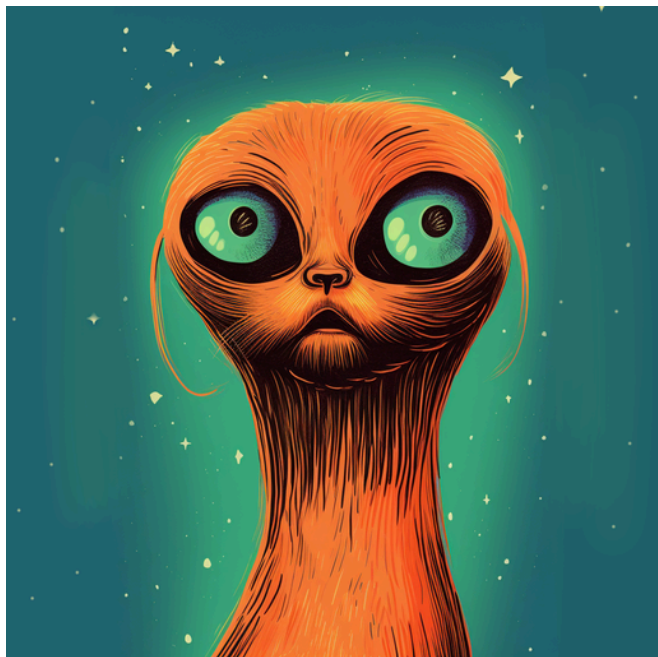
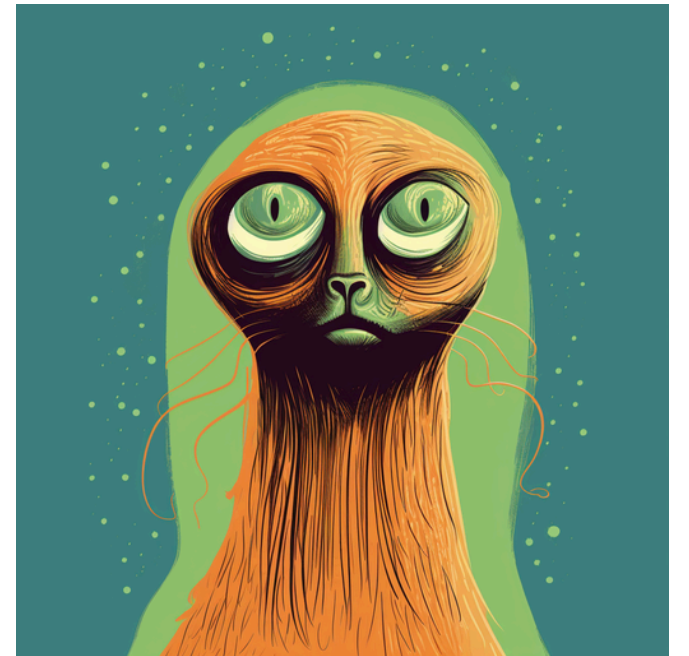
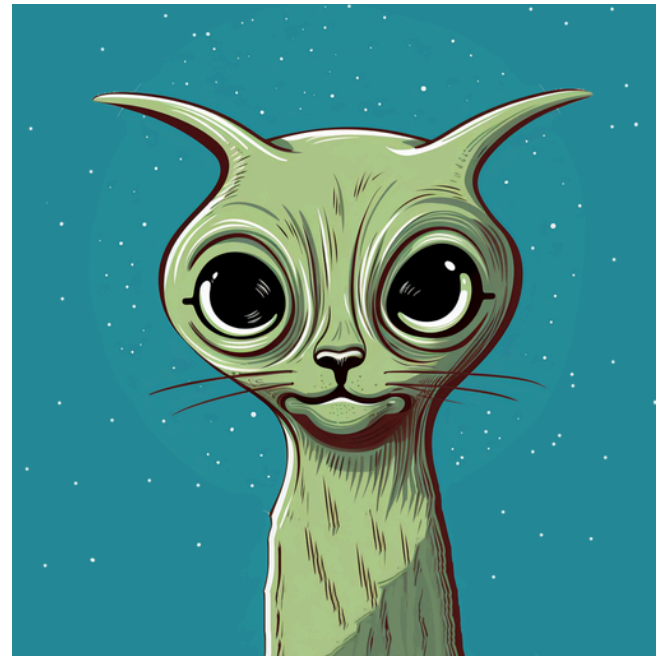
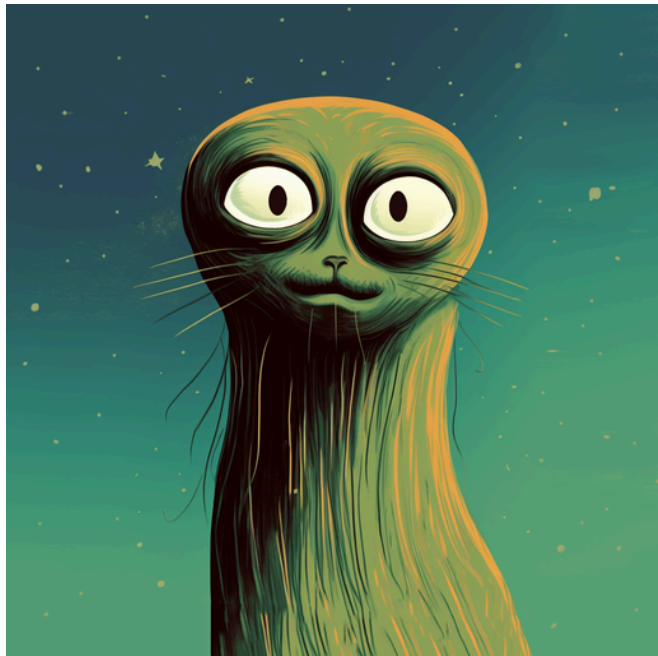
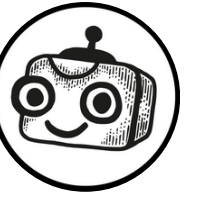




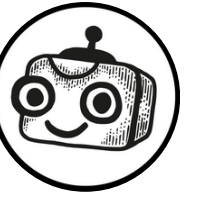
# Alien Detective Agency

Searching for the origins of the little foundling.

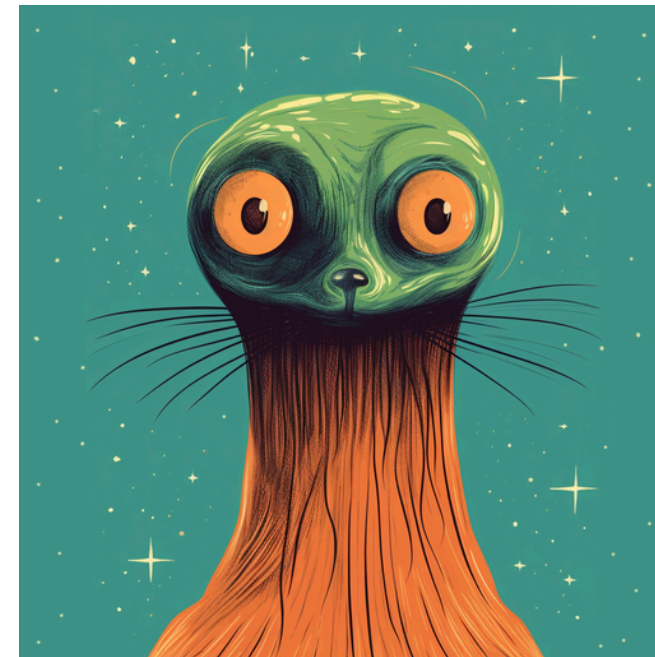
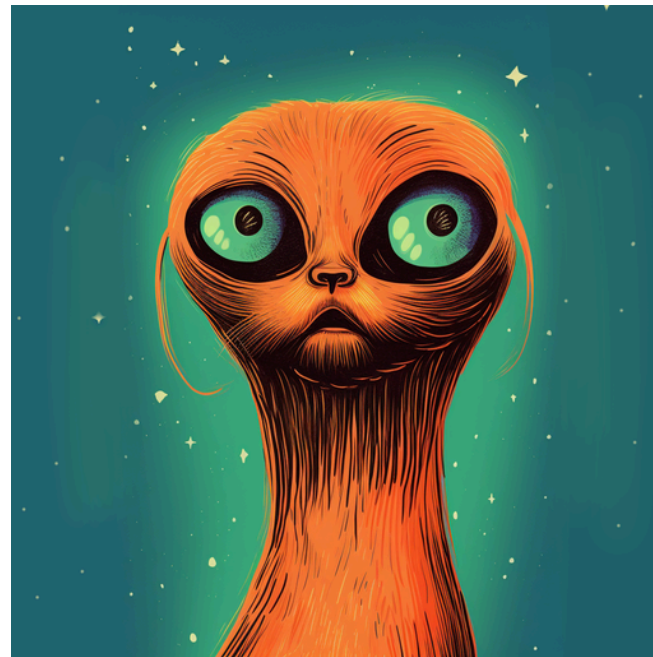
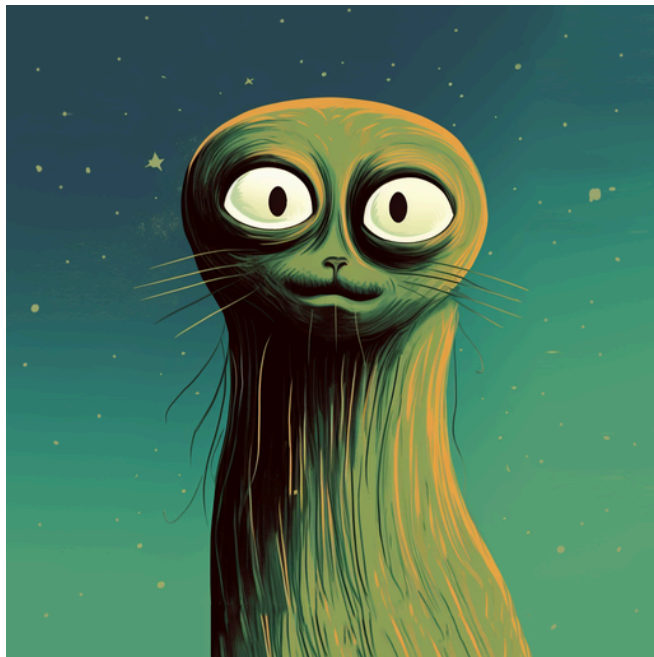




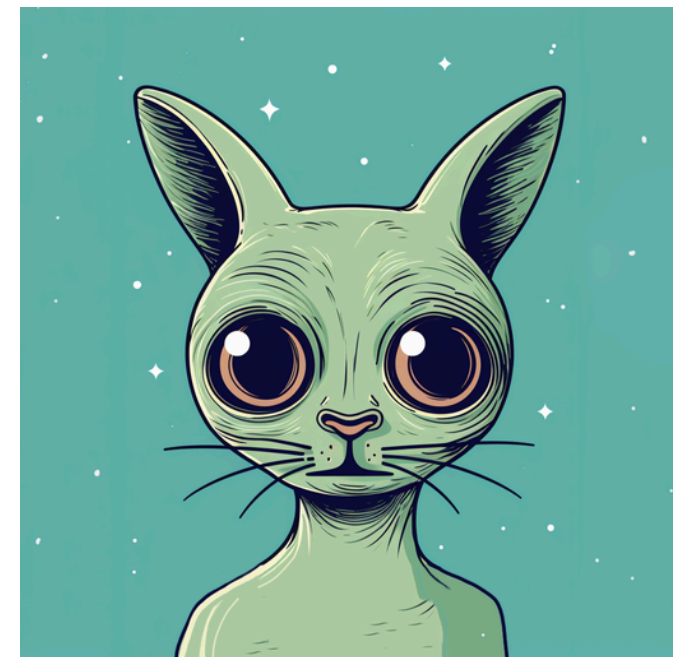




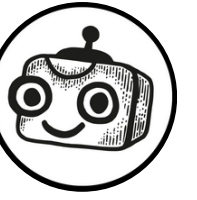
## The Fluff Family



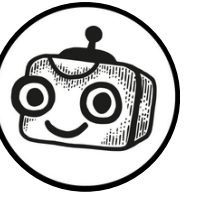
## Earl family







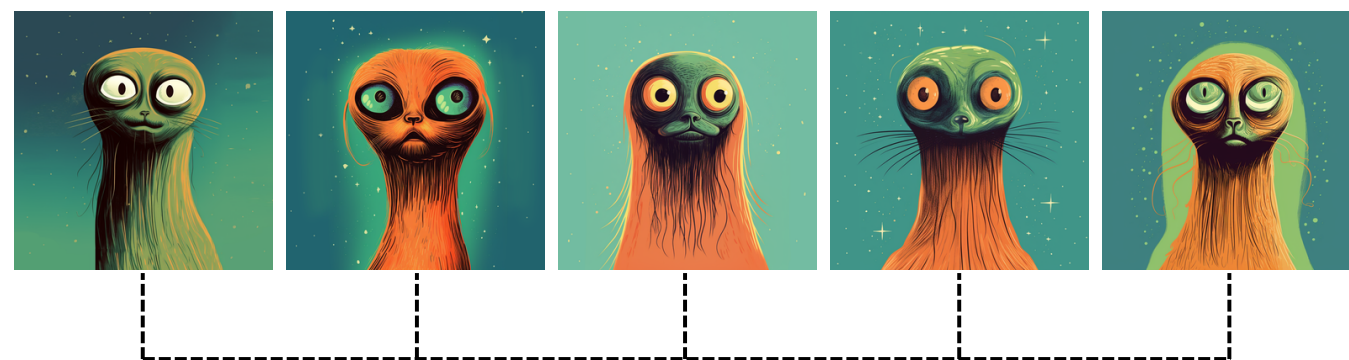




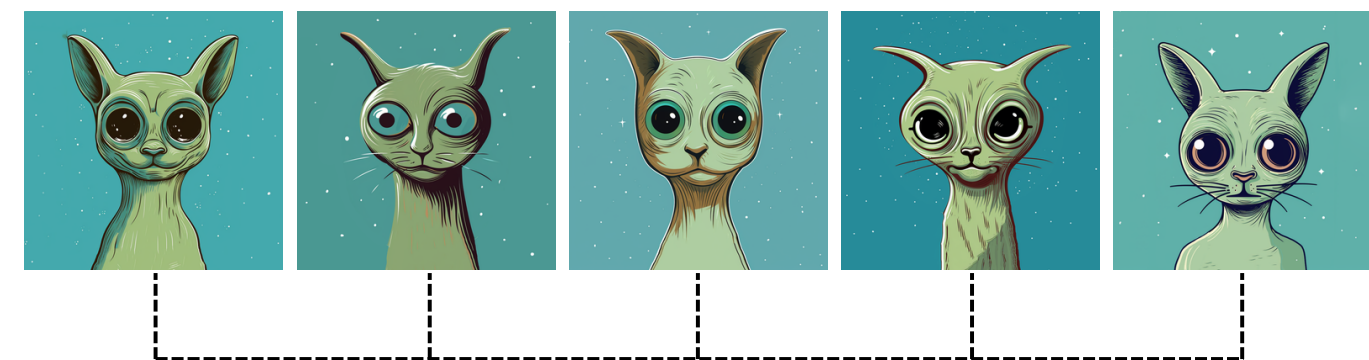
# Dataset

A dataset is a collection of data used by people to train AI programs.

It can include images (but also audio, video, spreadsheets, and more). In our case, it consisted of portraits of aliens. If we want to teach an AI program to recognize different families, we first need to show it examples of individual family members and sort them into categories.

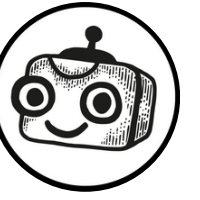


Fluffs



Earls

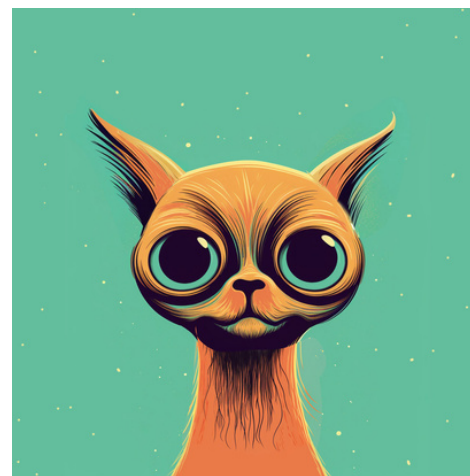




The program looks for different patterns on its own. Simplified, these could be things like ears, beards, fur, colors, and so on. So it might have found fur as a common feature in the Fluff family, and ears in the Earl family.

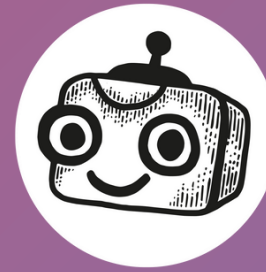
When we later present the program with new images it hasn't seen during training, it looks for similarities to what it learned before. Based on those, it decides which category the new image belongs to.

42%  
probability that  
it's a Fluff,  
because fur seems  
to be the dominant  
feature



52%  
probability that  
it's an Earl,  
because ears seem  
to be the dominant  
feature





See you again in the next lesson!

But this time, we'll let artificial intelligence decide where the founding belongs!