

AI Curriculum

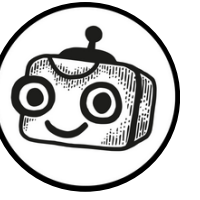
Teaching Material for the AI Curriculum for Elementary and Secondary Schools
Computer Science at Secondary Schools

02

Data Deck

Interpreting Data Using Chatbots

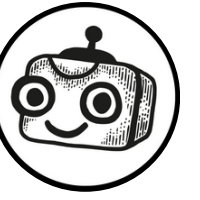




Google Trends



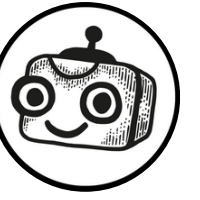
trends.google.com/trends/explore



How to Work with a Chatbot

IMPORTANT!

- 1 Describe what the chatbot should do. Use clear and descriptive language without grammar mistakes.
- 2 Read the generated text carefully and think about whether it makes sense.
- 3 If the text includes factual information, verify it using another source.



Choose the app you'll use to analyze the data.



chatgpt.com



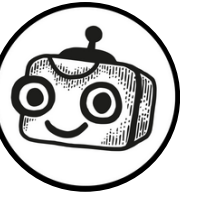
claude.ai



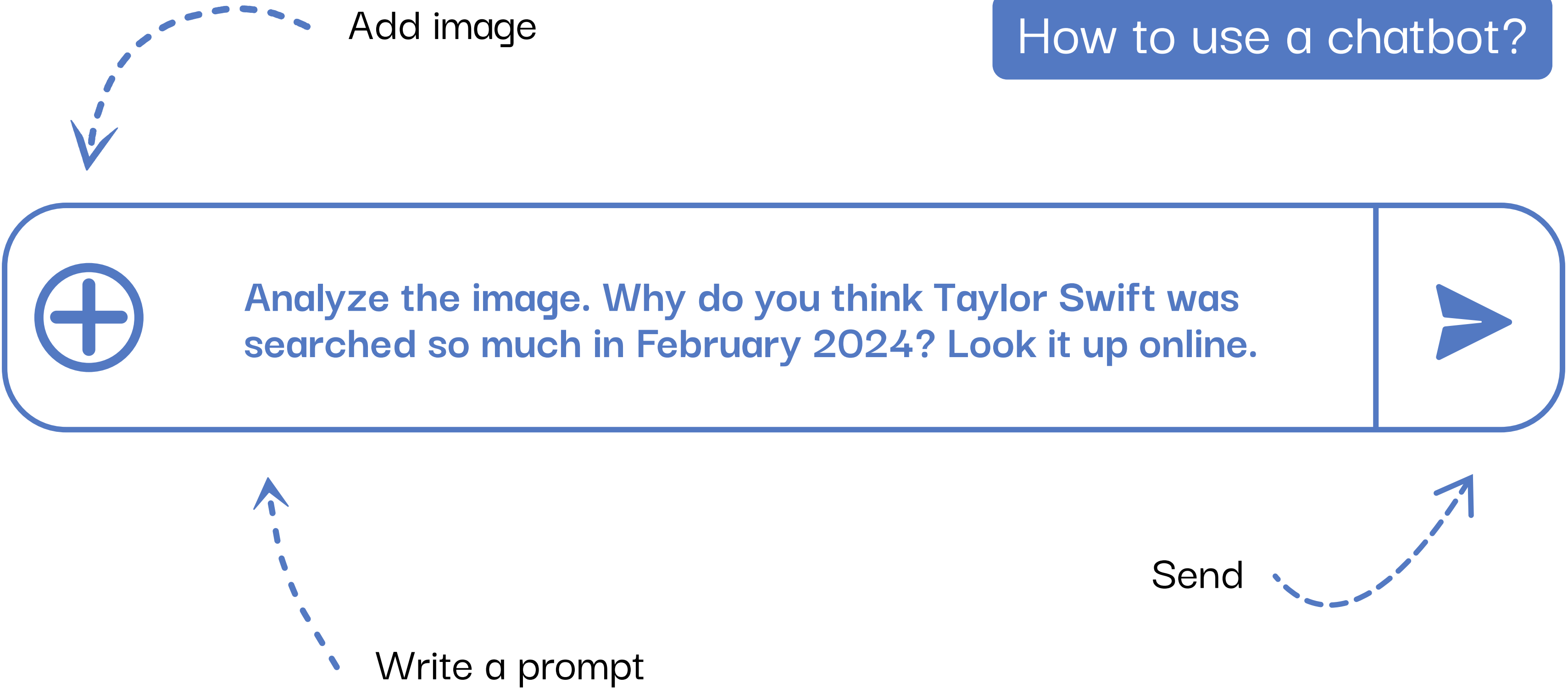
copilot.microsoft.com

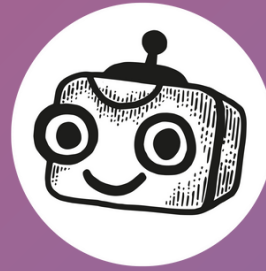


[Google Gemini](https://gemini.google.com)



How to use a chatbot?





Alright, bye!

That was the second teaching material from the Data Deck.
You're all set to jump into the next one! 🥰