

AI Curriculum

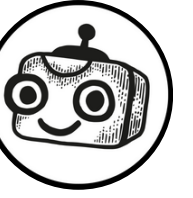
Teaching Material for the AI Curriculum for Elementary and Secondary Schools
Computer Science at Secondary Schools

01

Data Deck

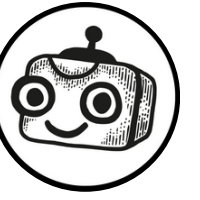
Big Data





Introductory Discussion

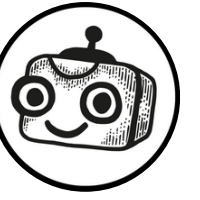
What changed when the World Health Organization declared the COVID-19 outbreak a global pandemic?



The New Normal



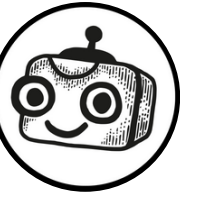
thenewnormal.is



A Day in the Life...

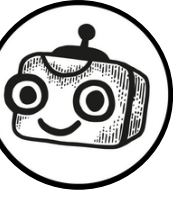


searchingthe.world



Look at the data interpretations and complete the following sentences:

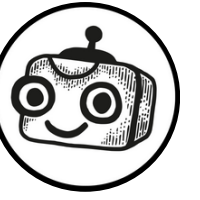
- 1) We already knew that...
- 2) We found it interesting that...
- 3) We were surprised that...
- 4) We were wrong to think that...
- 5) We didn't understand...



Toilet paper and sewing machines!



Google Trends



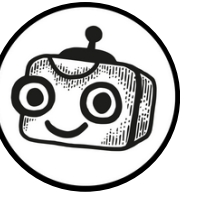
Toilet paper



Sewing machine



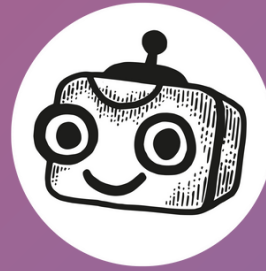
Train ticket



Big Data

Big data refers to massive, diverse sets of information that are usually generated quickly and can only be processed using powerful computers – often with the help of machine learning methods.

Big data can include images, videos, audio, text, or so-called digital traces, such as data about user behavior. It is a result of the rapid development of the internet and the falling cost of data storage and processing. There's usually so much of it that traditional methods aren't enough – new approaches, like machine learning, are needed to make sense of it.



Bye for now!

This was the first teaching material from the Data deck.
You can continue with the next one! 🤗